

## Olney Presbyterian Cemetery

Approximately 32 acres of the church's land has been developed and set aside for use as a cemetery. The oldest known grave in the cemetery is dated 1795, two years after the church was organized. The cemetery has become a site of historical significance. Found there are graves of soldiers from the Revolutionary War (1775-1783), the War of 1812 (1812-1815), the Mexican War (1846-1848), the Civil War (1861-1865), the Spanish-American War (1898), World War I (1914-1919), World War II (1939-1945), Korea (1950-1953) and Vietnam (1959-1975). The oldest section of the cemetery is to the rear and south of the church where burial plots were laid out with little apparent order or arrangement. One corner of that area contains the bodies of Negro slaves, some of whom would have attended worship services at Olney. Many of the tombstones in this area have interesting designs and inscriptions. The cemetery is now divided



into 5 sections with regularly delineated concrete cores which were sunk into the ground in the mid 1950's.

This old Iron Gate is attached to two stone pillars. It marks the entrance to the oldest portion of the church's cemetery (Section 1). It was crafted by Caleb A. Huffstetler who operated a blacksmith shop and was also a Justice of the Peace. The gate was made around 1860.



This stone marker near the Iron Gate honors the memory of seventeen Revolutionary soldiers buried here. The marker was erected in 1935 by the William Gaston Chapter of the Daughters of the American Revolution.

The cemetery itself is divided into five sections, with the oldest (section 1) located with lot 1 beginning directly behind the sanctuary and extends to the woods in the back. It is bordered by the picnic shelter and the drive by the caretaker's house on one side and a driveway through the cemetery on the other.

DRIVEWAY TO CARETAKER'S															
	11-B	11-C	11-D	11-E	11-F	11-G	65-D	64-B	65-A	67-A	12-A	58E-12A	69B-12A		
10-A	10-B	10-C	10-D	10-E	10-F	10-G	65-C	68-A	69-L HARRISON 69	69C ALEXANDER 97	10M-E ROBINSON 125	69T-12B	69B-12B		
101-F FOR SAR 84	101-A JAMES R ROBINSON 8	101-B ED HARRISON 12	101-C HOLLAND 9-B	101-D HENRY GORDON 9-C	101-E BERRY 9-D	101-F 9-E	101-G 9-F	68-B	JAMES M TAYLOR 64	J. A. GOBLE 65	B H JOHNSON 69	J E GILL 124	JR H HARRISON 127	GEORGE GOFF 152	
102-A JAMES LAMAR 84	102-B DANIEL WALKER 1	102-C MARGRY DARRIMA 43	102-D MENDENHALL WELSON 63-D	102-E SARNO PRICE 62-C	102-F SHARON 8-D	102-G LANSLEY 8-E	102-H S-F	102-I S-G	PATRY MENDENHALL 93-A	UNKNOWAN 86	E I MULLAMBER 94	ELIP LUBBERGER 69	B J LUBBERGER 123	MARGARET ANN SMART 126	MORRIS GOBLE 151
103-A JESSE ROBINSON 74	103-B E. CLARENCE WELSON 14	103-C JOHN FARRIS 14	103-D GORDON BELL 11-B	103-E SAMUEL M WELSON 1-C	103-F CONRAD FORBES 1-F	103-G JOHN BARRIE 1-E	103-H HOWELL 1-D	103-I 1-G	9-A LEWIS 66	R H WELSON 66	GEORGE R RUSSELL 61	J A. GIBBS 169	W F SMITH 122	JOHN EDWARD RUSSELL 128	ARTHUR HARRISON 150
104-A SHELDON 9-5	104-B RUSSELL GIBBS 1-E	104-C T. D. HARRISON 16	104-D HENDERSON HOLLAND MENDENHALL 6-D	104-E JACOB R. WELSON 6-D	104-F 8-E	104-G 6-F	104-H 8-D	104-I 8-C	W H HARRISON 82	J W ANDER 87	LEROY EARL MAYNARD 81	J. E. GILL 15A	S. M. HARRISON 81	A B SMART 129	M C DAVIS 148
105-A 105	105-B T. M. FARRIS 15	105-C ALEXANDER 18	105-D ADAM HOLLAND JACKSON 6-C	105-E HOLLAND FORBES WELSON 6-C	105-F DANIEL DANSON 5-D	105-G 5-E	105-H 5-F	105-I 5-G	8-E STROUPE 81	HARRI HARRISON 68	H F FORBES 91	WALTON A FORBES 102	GEORGE GOBLE 128	J C HARRISON 131	ALBERT BATH 146
106-A ROBERT HARRISON 64	106-B V. E. HARRISON 17	106-C DANIEL HARRISON 17	106-D FORD HARRISON 4-B	106-E GILLIAM HARRISON 4-C	106-F WILLIAM M HOLLAND 4-D	106-G 1 HOLLAND 4-E	106-H JERRY HARRISON 4-F	106-I ERDIE HARRISON 4-G	106-J I. G. FALLS 61	J. M. FARRIS 58	C. P. ROBINSON 60	C. PRITE ROBINSON 63	W. M. NOLAN 110	W. B. CARSON 135	ERNEST BATH 147
107-A 107	107-B ARABON DITZER WELSON 1-B	107-C ANNA HARRISON 1-C	107-D ANNA HARRISON 1-D	107-E BOB FARRIS WELSON 2-C	107-F FARRIS HARRISON 2-E	107-G FARRIS GOBLE 3-F	107-H ELI HARRISON 3-G	107-I WILLIAM HARRISON 69	107-J W. L. LUBBERGER 70	107-K GEORGE M DICKSON 88	107-L NEAL HARRISON 104	107-M EDGAR L LEWIS 116	107-N ELI MENDENHALL 133	107-O ROSS HARRISON 149	
108-A 108	108-B G. E. HARRISON 8-B	108-C EMERSON HARRISON 1-C	108-D EMERSON HARRISON 2-D	108-E FRANKLIN HARRISON 3-E	108-F WILLIAM R. HARRISON 3-F	108-G JESSE B HARRISON 3-G	108-H R. C. ROBINSON 56	108-I S. E. HARRISON 71	108-J JONAS H DICKSON 89	108-K N. T. HARRISON 88	108-L J. L. HARRISON 117	108-M W. S. HARRISON 134	108-N JOHN L. HARRISON 145		
109-A 109	109-B MARRIAGE HARRISON 1-A	109-C MARRIAGE HARRISON 1-B	109-D MARRIAGE HARRISON 1-C	109-E MARRIAGE HARRISON 1-D	109-F MARRIAGE HARRISON 1-E	109-G MARRIAGE HARRISON 1-F	109-H MARRIAGE HARRISON 1-G	109-I MARRIAGE HARRISON 1-H	109-J MARRIAGE HARRISON 1-I	109-K MARRIAGE HARRISON 1-J	109-L MARRIAGE HARRISON 1-K	109-M MARRIAGE HARRISON 1-L	109-N MARRIAGE HARRISON 1-M	109-O MARRIAGE HARRISON 1-N	
110-A 110	110-B MARRIAGE HARRISON 2-A	110-C MARRIAGE HARRISON 2-B	110-D MARRIAGE HARRISON 2-C	110-E MARRIAGE HARRISON 2-D	110-F MARRIAGE HARRISON 2-E	110-G MARRIAGE HARRISON 2-F	110-H MARRIAGE HARRISON 2-G	110-I MARRIAGE HARRISON 2-H	110-J MARRIAGE HARRISON 2-I	110-K MARRIAGE HARRISON 2-J	110-L MARRIAGE HARRISON 2-K	110-M MARRIAGE HARRISON 2-L	110-N MARRIAGE HARRISON 2-M	110-O MARRIAGE HARRISON 2-N	

SECTION # 1



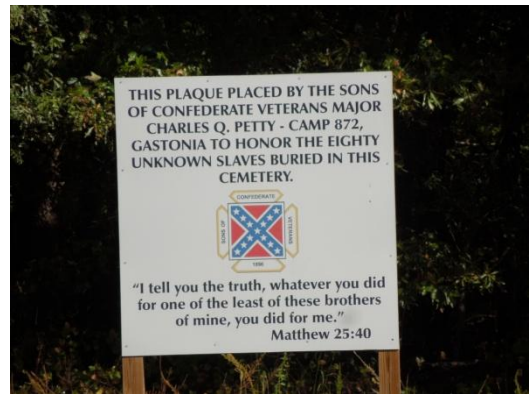
View of section one from the area of section 2 looking toward the church.



Behind Church, Section 1, Left side



Section 1, Far right side

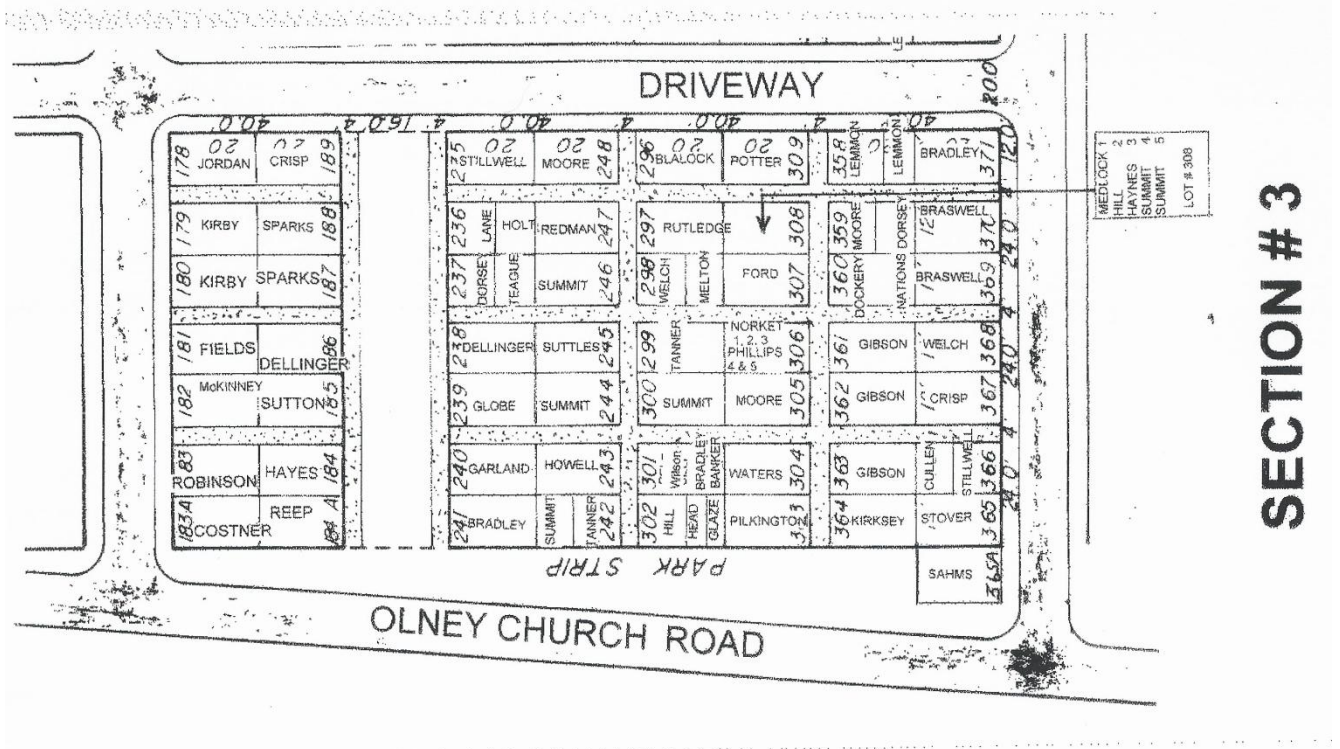


Area near back of Section one with unmarked graves believed to be those of congregation members who were slaves.

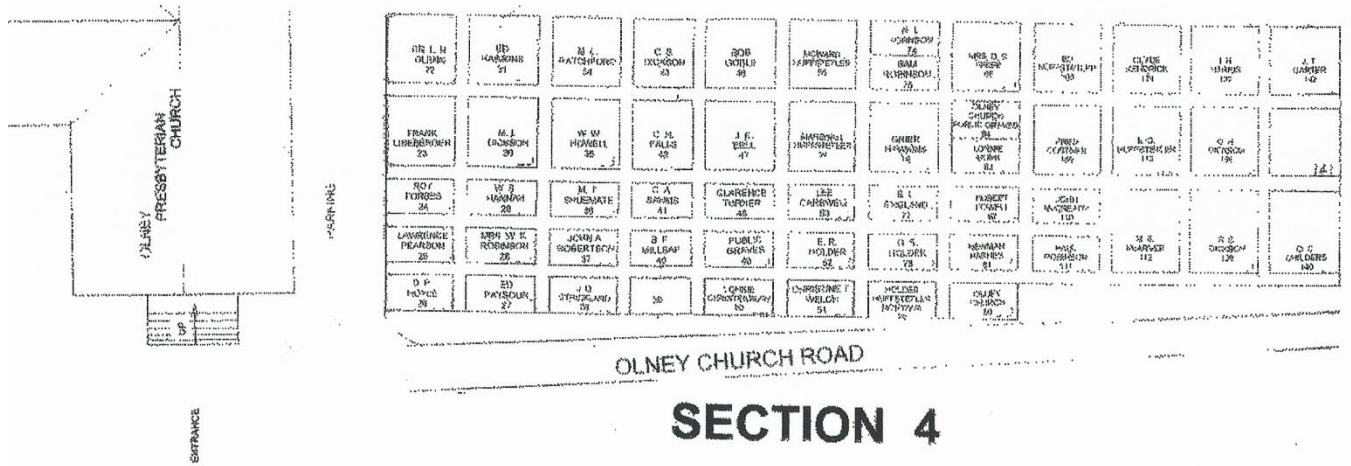
Section 2 continues on the other side of the driveway which bisects the cemetery. It has a waterway which also divides it, and it is bordered on the lower side by a driveway and a wooded area.



Section 3 is located opposite section 2 in the lower portion of the cemetery and is entirely circumscribed by the driveways in the cemetery. It is bordered by the woods as well as section 4 on the side toward the church.



Section 4 is located beside the church and is separated from section 1 by a driveway. The driveway through the cemetery which marks the far border of section one, also marks the far border of section 2.



Section 5 is the area furthest from the church itself and has a large area which has not yet been opened. The area noted for car parking is located on the church side of the cemetery and the marked roadway is Olney Church Road.



Views of Section 5



View near the Church across area not opened



View from walkway into Section 5